

BEST PRACTICES IN CONSEQUENCE MANAGEMENT FOR DISEASE DISASTERS

Amy E. Smithson, PhD

Senior Fellow



PANDEMIC RESPONSE CHALLENGES

- **TIMELY DETECTION**
- **CRITICAL SUPPLY SHORTAGES:**
 - DRUGS
 - MEDICAL PERSONNEL
 - HOSPITAL CAPACITY
- **ABILITY TO:**
 - DELIVER MASS PROPHYLAXIS RAPIDLY
 - EXECUTE OTHER CONTROL MEASURES
 - ALLEVIATE PANIC

SYNDROMIC SURVEILLANCE

- **EARLIEST POSSIBLE DETECTION, BUT NON-SPECIFIC**
- **BASIC COMPONENTS:**
 - **9-1-1 CALLS:**
 - **7 CALL TYPES**
 - **HISTORICAL BASELINE REQUIRED**
 - **SENTINEL FACILITIES**
 - **GEOGRAPHIC DISPERSAL**
 - **OVER-THE-COUNTER DRUG SALES**
 - **CORONER'S OFFICE**

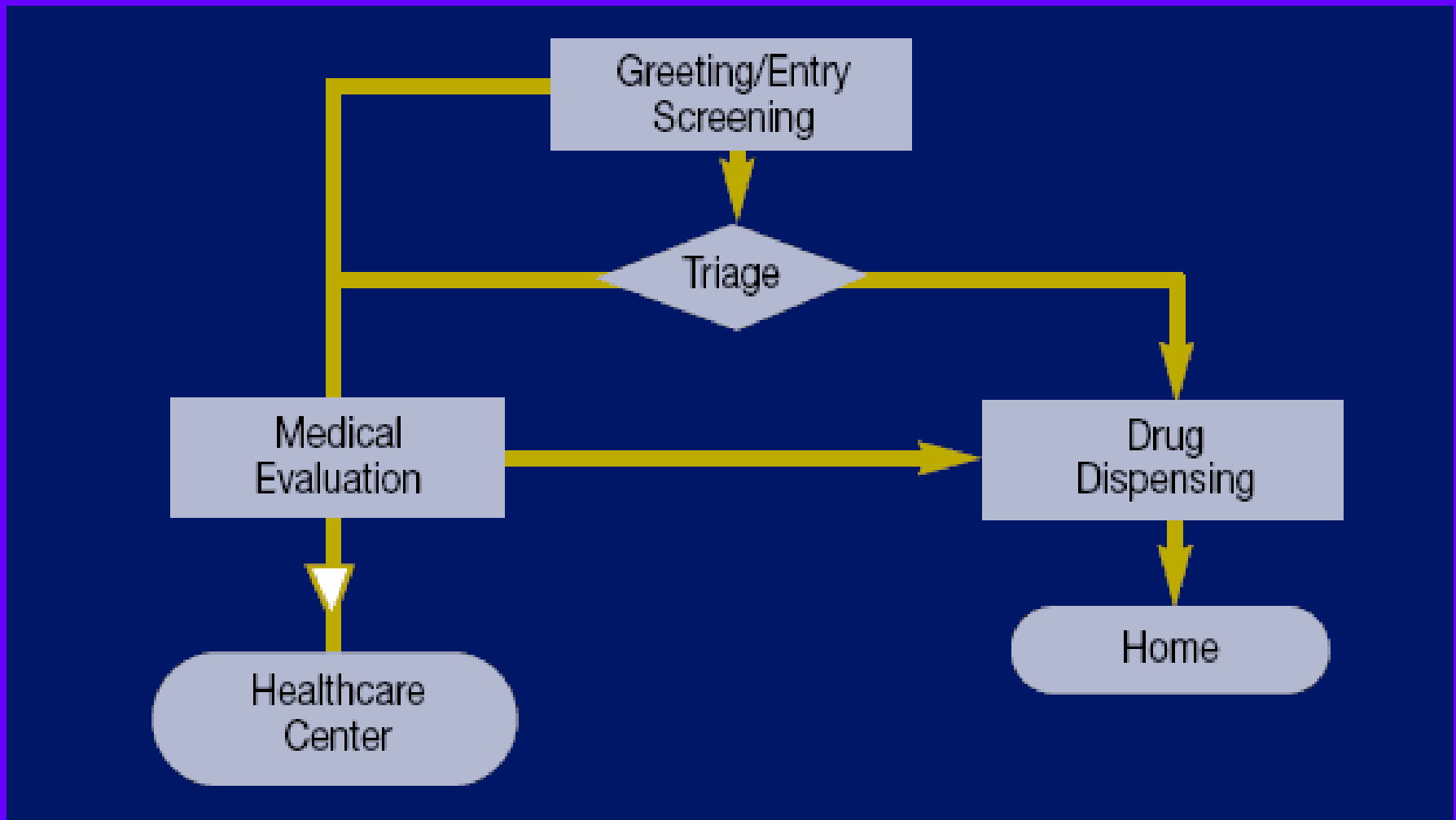
OVERCOMING MEDICAL SUPPLY SHORTAGES

- **SHELF LIFE EXTENSION PROGRAM:**
 - EXAGGERATED STORAGE CONDITIONS => POTENCY TESTING
 - EXTENSIONS UP TO 10 YEARS
- **PHARMACEUTICAL "BUBBLES:"**
 - COUNTERS "JUST-IN-TIME" SUPPLY
 - DESIGNATED HOSPITALS ROTATE CACHE
- **NATIONAL MEDICAL SUPPLY REPOSITORY:**
 - DISTRIBUTION DRILLS

REVAMPING MASS PROPHYLAXIS

- **WHEN DIAGNOSIS PRESUMED => HIGH THROUGHPUT PROPHYLAXIS**
- **NON-MEDICAL VOLUNTEERS:**
 - RECEIVE “CRASH” TRAINING
 - PERFORM INITIAL + MORE DETAILED SCREENING
 - DISPENSE MEDICINES WITH WRITTEN INSTRUCTIONS
- **NURSES/DOCTORS EXAMINE POSSIBLY SYMPTOMATIC**
- **WORKS FOR: ANTIBIOTICS, ANTIVIRALS, VACCINATIONS**
- **ALLOWS MEDICAL PERSONNEL TO FOCUS ON PATIENT CARE**

A MASS PROPHYLAXIS "POD"



SPECIALIZED RESPONSE TEAMS

- **PROVIDE CRITICAL SURGE CAPACITIES => PERSONNEL + EQUIPMENT**
- **CHARACTERISTICS:**
 - CERTIFIED PROFESSIONALS
 - SELF-SUFFICIENT
 - SPECIAL SKILLS MAINTAINED VIA TRAINING, EXERCISES, DEPLOYMENTS
- **TYPES OF TEAMS:**
 - DMATS
 - NNRT
 - NVRT
 - DMORTS
 - NPRT



REGIONAL

HOSPITAL COORDINATION

- **AGREED PLAN TO ADDRESS:**
 - BURDEN-SHARING, TRANSFER OF PATIENTS
 - EMERGENCY SUPPLIES
 - INTEGRATION OF OUTSIDE ASSETS
 - COMMAND, CONTROL, COMMUNICATIONS
 - OFF-SITE SURGE CARE FACILITIES:
 - INDOOR SPORTS ARENAS
 - SCHOOL GYMNASIUMS
 - IDENTIFY, TAP PERSONNEL RESERVOIRS
 - SECURITY
 - COMMUNICATIONS:
 - HAM RADIO OPERATORS
 - PUBLIC INFORMATION
- **COORDINATION => DEFINE + FILL GAPS**
- **EXERCISES!**

CRISIS COMMUNICATIONS

- **DURING CRISIS:**
 - EARLY
 - OFTEN
 - CLEAR DATA, INSTRUCTIONS
 - NON-CONFLICTING
- **BEFORE CRISIS:**
 - DISPEL MYTHS
 - EXPLAIN RELATIVE RISKS:
 - CAR ACCIDENTS = 43,000+
 - LIGHTENING STRIKES = 60+
 - BATHTUB ACCIDENTS = 330+
 - PROVIDE GENERIC INDIVIDUAL/FAMILY PREPAREDNESS INSTRUCTIONS
 - ESTABLISH THAT GOVERNMENT = HAS PLANS, CAPABILITIES



RESOURCES

- **SYNDROMIC SURVEILLANCE:**

- www.cdc.gov/ncphi/diss/nndss/syndromic.htm
- www.syndromic.org

- **MEDICAL SUPPLY AVAILABILITY:**

- <https://www.shelflife.hq.dla.mil/>
- https://slep.dmsbfda.army.mil/slep/slep_info_paper_Oct%2007_Final_10-9-07.pdf
- <http://www.bt.cdc.gov/Stockpile/>

- **MASS PROPHYLAXIS:**

- www.mchealth.org/emergprep/documents/JSpitzer_PHR_OpEvaI_2007.pdf

- **SURGE CAPACITIES:**

- www.hhs.gov/aspr/opeo/ndms/teams/index.html
- www.acponline.org/clinical_information/journals_publications/acp_hospitalist/jan07/surge.htm